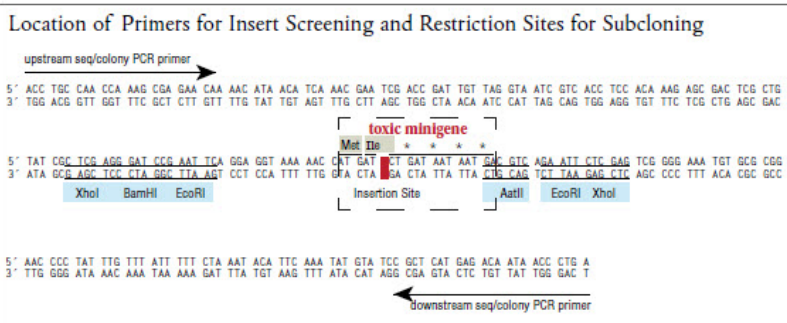
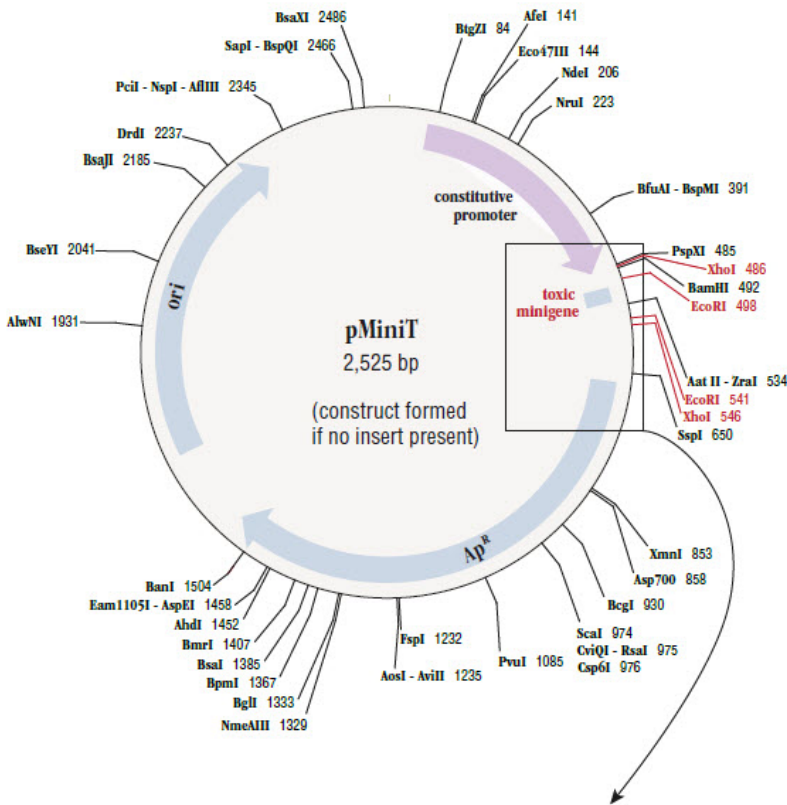
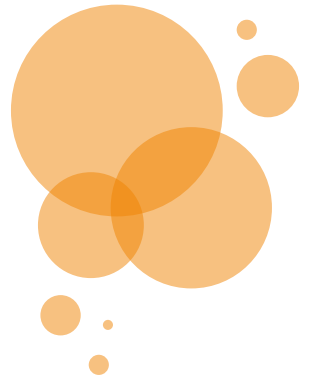


NEB® PCR Cloning Kit

- 任何PCR產物無論blunt-ends及TA-ends皆可直接使用
- PCR後可不需純化，反應5分鐘即可進行transformation
- 只長出插入成功的細胞，讓您跟藍/白篩檢測說再見



Ligation

Mix insert with 1µl linearized vector; bring to 5 µl with H₂O

↓

Add 5µl 2X Cloning Master Mix

↓

Incubate at room temperature (25°C) for 5-15 minutes

↓

Incubate on ice for 2 minutes

Transformation

Add 2µl of completed ligation reaction to 50 µl competent cells

↓

Incubate on ice for 20 minutes

Heat shock at 42°C for 30 seconds

↓

Incubate on ice for 5 minutes

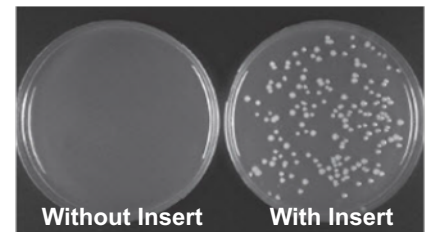
Add 950µl SOC for outgrowth

↓

Incubate at 37°C for 1 hour

Plating

Spread 50µl on ampicillin selection plate; incubate at 37°C overnight



PCR cloning with low/no background

Catalog #	Size	Kit Components
E1202S	20 reactions	Master mix, Vector, Primers, Competent cell, SOC outgrowth medium, Control Plasmid, etc.